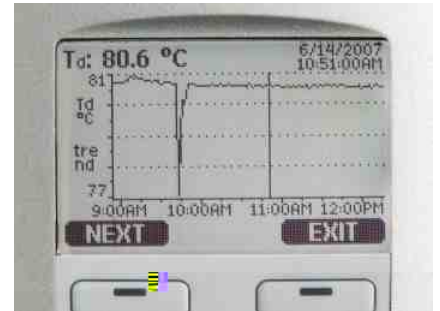


DMT345 DMT346



DRYCAP®

DMT345 DMT346



DRYCAP
DMT345 DMT346

DRYCAP

DRYCAP®

DMT345

DMT345

140°C

DMT345 DMT346

180°C

DMT345 DMT346

/	
DMT345	180°C (356°F)
DMT346	350°C (+662°F)
	± 2°C (± 3.6°F)
	DRYCAP
	(NIST)
	RS232/485
	WAN/LAN
	MODBUS (RTU/TCP)

DMT346

DMT346 140°C 350°C

DMT346

DMT 3 4 5 DMT 3 4 6

USB RS 232 RS 485

DMT345 DMT346 MODBUS

MODBUS

RTU (RS 485) MODBUS TCP/IP ()

DRYCAP

Microsoft Windows PC

(WLAN

USB

DMT345 DMT346

DMT345/346

PC

12

DMT345

DMT345

DRYCAP 180S

-40 ... +100°C (-40 ... +212°F) Td
± 2°C (± 3.6°F) Td

A

1 / 1

63% [90%]

5 [10]

45 [5]

DMT345

0 ... +180°C (+32 ... +356°F)
80%RH

0°C ± 0.4°C

Pt 100 RID FO.1 IEC 60751

R DMT345

0 ... 100 %RH

0 ... 80 %RH

10%RH

± 10%

10%RH

± 1.5 %RH + 1.5%g

DMT345

0 ... 1000 g/kg (0 ... 7000 gr/lbs)

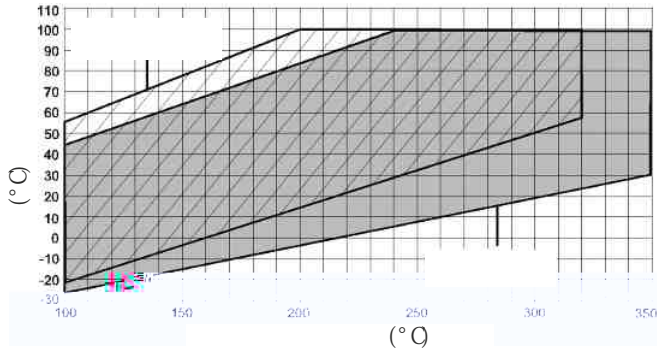
± 12%

DMT346

DMT346

DRYCAP 180S

-25 ... +100°C (-13 ... +212°F) Td
± 2°C (± 3.6°F) Td



1 / 1

63% [90%]

5 [10]

45 [5]

DMT346

0 ... 1000 g/kg (0 ... 7000 gr/lbs)
± 12%

DMT345 DMT346

DMT345 +180°C (+356°F)

DMT346 +350°C (+662°F)

-40 ... +60°C (-40 ... +140°F)

0 ... +60°C (32 ... +140°F)

-55 ... +80°C (-67 ... +176°F)

(~ 200)

EMC

EN61326-1, t

IEC61000-4-5

40 ohm

DMT345 DMT346

10 ... 35 VDC, 24 VAC ± 20%

100 ... 240 VAC 50/60 Hz

3

6

20°C (U_n 24 VDC)

U_{out} 2x0 ... 1V/0 ... 5V/0 ... 10V

25 nA

U_{out} 2x0 ... 20mA

60 nA

RS232

25 nA

+ 20 nA

+ 110 nA

2 , 3)

0 ... 20 nA 4 ... 20 nA

0 ... 1 V, 0 ... 5 V, 0 ... 10 V

20°C

± 0.05% full scale

± 0.005%/°C

R_L < 500 ohm

R_L > 2 kohm

R_L > 10 kohm

0.5 mm² (AVG 20)

RS232, RS485 ()

ASCII , MODBUS RTU

RS232, USB

0.5 A 250 VAC SPDT

2+2 pcs ()
()

10BASE-T, 100BASE-TX

8P8C (RJ45)

DHCP () ,

Tel net, MODBUS TCP/IP

DHCP () ,

802.11b

RP-SMA

IPv4

WAN ()

IPv4

DHCP () ,

Tel net, MODBUS TCP/IP

VEP 64/128, VPA VPA2/802.11i

/ (WAN)

/

/

VPA / TKIP

VPA / CCMP (VPA2)

/ /

10 ()

4 5

1370

5

LCD

DMT345 DMT346

M20x1.5

8 ... 11mm/0.31 ... 0.43"

1/2" NPT

M2 8

5 16 4

1

2

USB-RJ45

219685

5.5 mm

2 , 5 10

()

G-Al-Si 10 Mg (DIN 1725)

IP 66

IP65 (NEMA4X)

1.0 - 3.0 kgs



/

DM345 DM346

